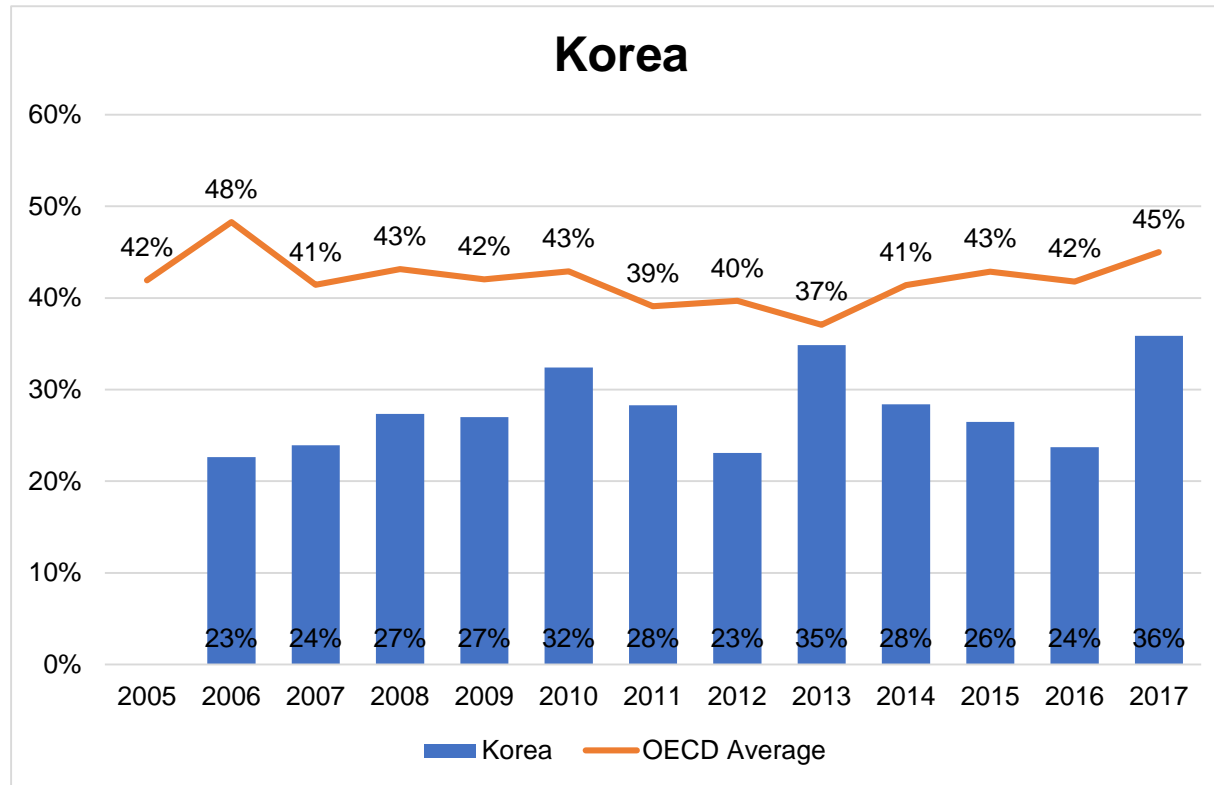


# **Trust in Government: Introduction**

**Wonhyuk Lim (KDI School)**

# Trends in Confidence in Government



Source: Lim and Wang (2018), based on Gallup World Poll data

Note: Confidence in government is measured by the proportion of respondents who say yes to the question, “Do you have confidence in each of the following, or not? How about the national government?” (Question WP139)

Annual time series data show that confidence in government is sensitive to current events and government actions. In Korea’s case, it seems to be driven primarily by political cycle, economic performance, disaster response, corruption, and perception of the government’s indifference to people’s concerns.

## Major Events

Feb 2008 President Lee Myung-bak takes office

Apr 2008 Candlelight demonstrations

Sep 2008 Effective response to the global financial crisis

Nov 2010 Seoul G20 Summit

Jul 2012 Lee’s elder brother jailed (corruption)

Feb 2013 President Park Geun-hye takes office

Apr 2014 Sewol Ferry tragedy

May 2015 MERS epidemic

Apr 2016 Ruling party defeated in parliamentary elections

Sep 2016 Park-Choi’s corruption scandal breaks

Mar 2017 Park removed from office through impeachment

May 2017 President Moon Jae-in takes office

## Gallup Polling Period

2006: Mar

2007: May

2008: Sep 5 – Sep 30

2009: Sep 2 – Sep 27

2010: Jun 7 - Jul 16

2011: Jun 16 – Jul 12

2012: part 1: Feb 8 – Mar 18; part 2: Apr 23 – May 24

2013: Jun 10 – Sep 13

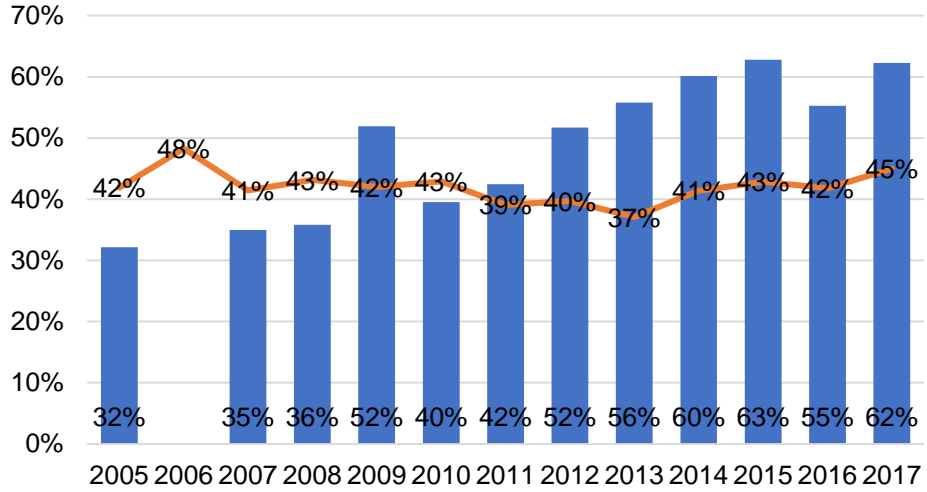
2014: part 1: May 9 – Jul 12; part 2: Oct 1 – Nov 25

2015: Sep 4 – Nov 27

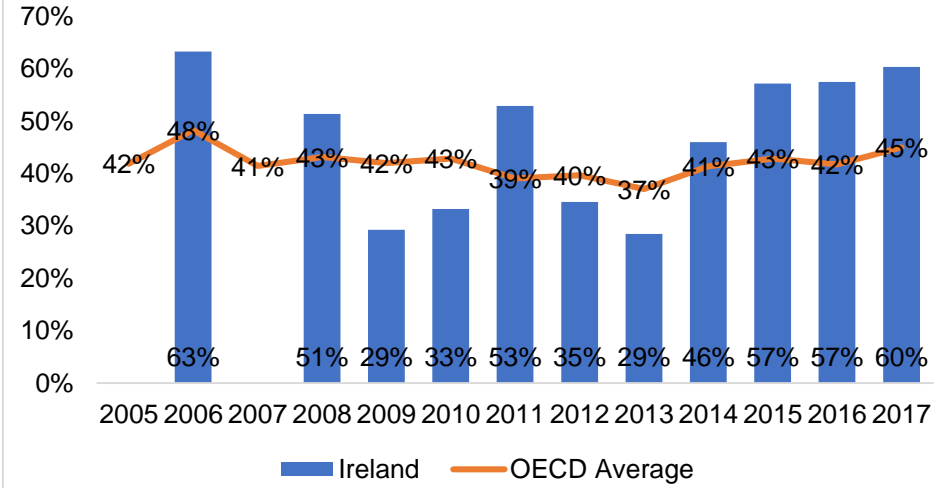
2016: May 12 – July 18

2017: Mar 28 – Jul 2

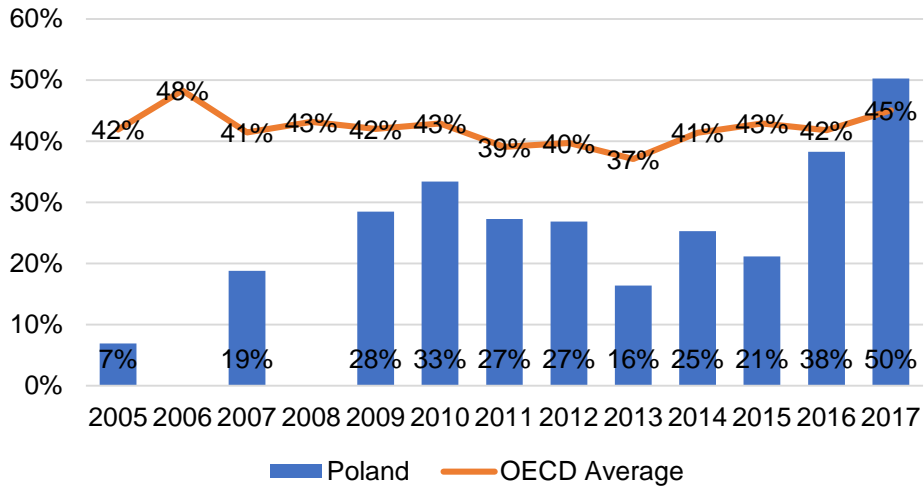
## Germany



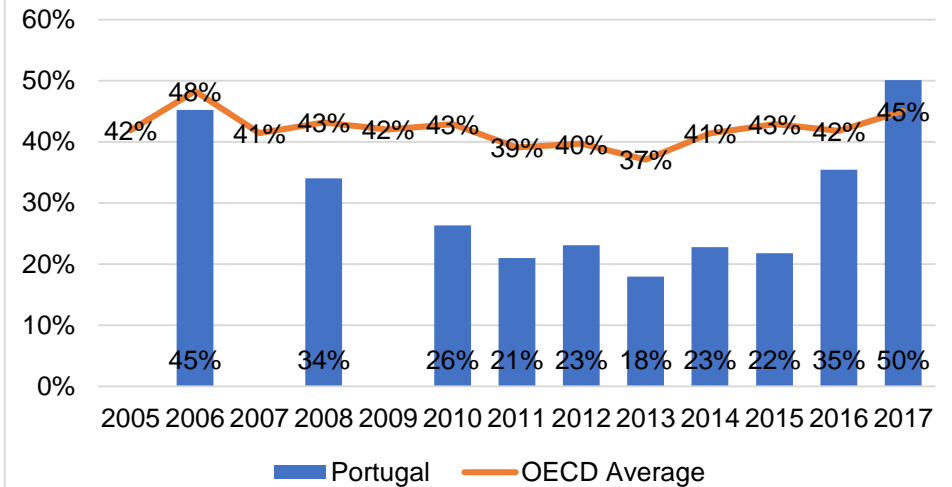
## Ireland



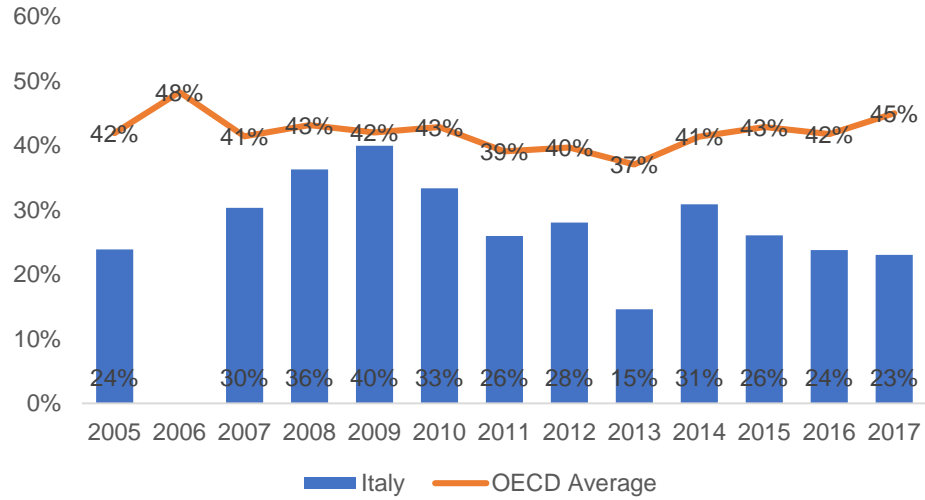
## Poland



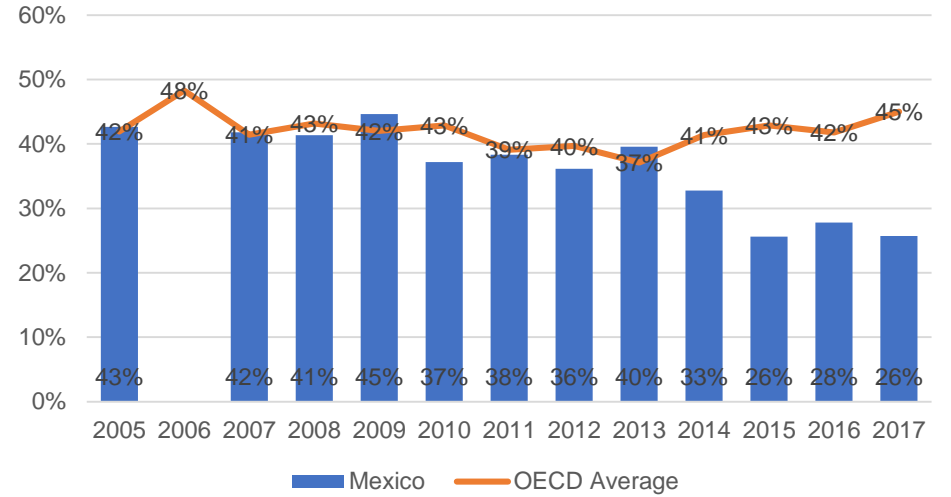
## Portugal



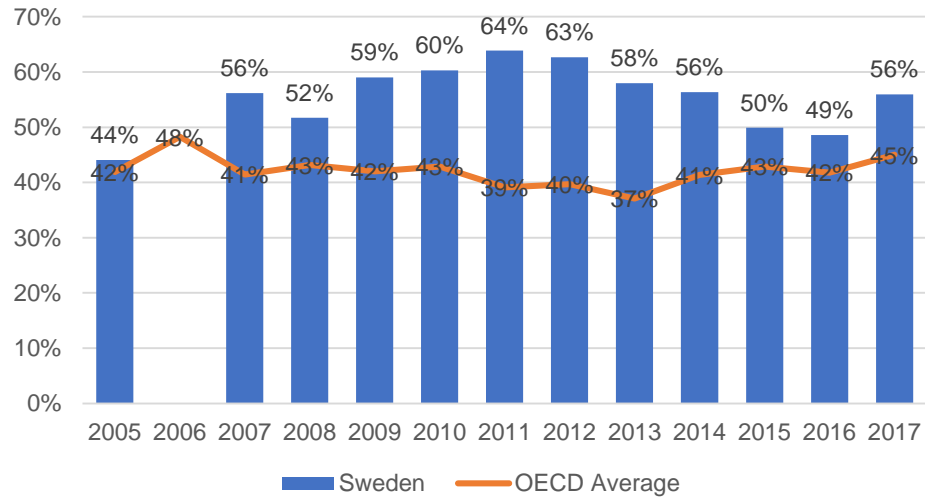
### Italy



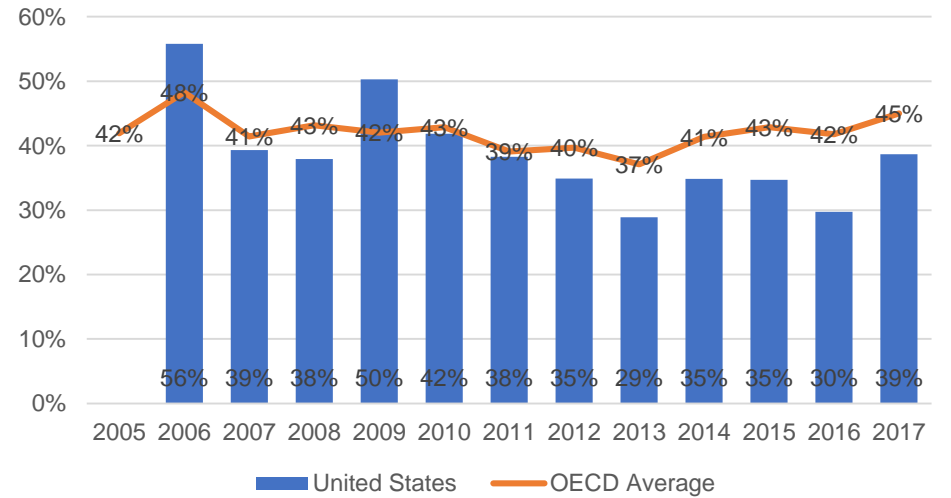
### Mexico



### Sweden



### United States



# Efforts to Improve Trust in Government

In terms of Worldwide Governance Indicators (WGIs), Korea has lagged behind its OECD peers in control of corruption, voice and accountability, and, somewhat surprisingly, political stability and absence of violence. Also, there is still room for improvement in the delivery of public service in terms of government effectiveness, regulatory quality, and the rule of law.

The Korean government launched *Government Innovation Strategy* in 2017, with target indicators focused on anti-corruption, confidence in government, and the quality of life. It draws from good-practice examples from Korea as well as other countries to meet these targets.

Performance Indicators	Korea's Recent Rank	Korea's Target Rank (2022)
Corruption Perception Index (TI)	51 <sup>st</sup> / 180 countries (2016/17)	Top 29
Confidence in Government (Gallup)	32 <sup>nd</sup> / 35 OECD countries (2016)	Top 19
Better Life Index (OECD), consisting of 24 indicators in 11 areas (housing, income, jobs, community, education, environment, etc.)	29 <sup>th</sup> / 38 OECD + BRS (2016): 38 <sup>th</sup> in community, 36 <sup>th</sup> in environment, 35 <sup>th</sup> in health, 35 <sup>th</sup> in work-life balance	Top 19